

**“Developing Concise and Effective
Geriatric Dementia Training
Curriculum
for Registered Nurses in a Hospital
Acute Care Setting”**

Tatiana Sadak, RN

Project Committee Chair: Dr. Patricia Betrus PhD

Project Committee Member: Dr. Rebecca Logsdon PhD

Sponsored by UW DeTornyay Center for Healthy Aging, UW RA and AAPPN

Introduction

- **The elderly comprise a large segment of the US population**
- **By 2030, the number of older Americans is expected to reach 70 million.**
- **There is a significant increase in risk of Alzheimer's disease and related dementias that associated with increased age**

(Brookmeyer, Gray, & Kawas, 1998).

Dementia and Hospitalizations

- **Majority of dementia patients will undergo one or several acute hospitalizations after the onset of their dementia**
- **Dementia patients are more vulnerable while hospitalized**
- **They average longer hospital stays**
- **They have higher prevalence of iatrogenic disorders, medical co-morbidities and complications**

(Cherry & Reid, 2001; Cummings, 1999; Jacelon, 1999).

Acute Care Hospital Nurses and Dementia Patients

- **No specialized training and education**
- **Concern about their ability to accommodate the needs of dementia patients within the fast paced hospital environment**
- **High degrees of job burn out and subsequent “staggering” nurse turn-over**

(Stolley, Buckwalter, & Shannon, 1991; Tolson, Smith, & Knight, 1999; Kovach, 2006).

Problem

A concise and focused biomedical-psychosocial dementia training intervention for acute care nurses will improve their ability to provide nursing care for hospitalized dementia patients.

Currently this type of training is not available.

Method

- **A meta-literature review (80 articles)**
- **An analysis of the most relevant studies**
- **Recommendations for future research:**
 - **assessing the skills and knowledge of acute care nurses in working with dementia patients**
 - **assessing the effectiveness of educational interventions for nurses**
 - **finding a comparable training model : evidence based guidelines for developing educational interventions**

Findings

There is a strong consensus that specialized and focused dementia training is a critical need that may alleviate acute care nurses' frustration and burn-out, as well as increase the quality of patient care, patient satisfaction and clinical outcomes.

Training Manual

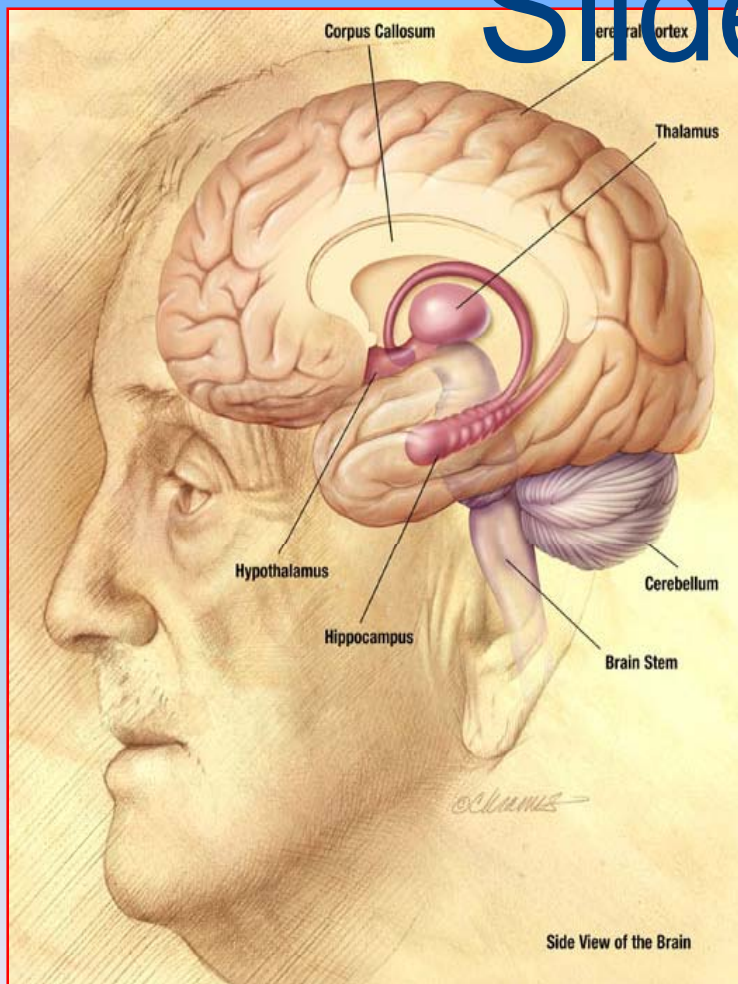
Focused and concise 120 min course of dementia education for acute care hospital nurses that addresses the major problems of dementia care identified by research as commonly encountered within the hospital setting

Training



- **Nurses will be:**
 - **Introduced to major themes in dementia care**
 - **Learn about the biomedical foundations of dementia and it's progression**
 - **Learn to anticipate commonly encountered problems**
 - **Gain skills to offer a variety of individualized interventions**

Sample Slide



Dementia and the Brain

- Dementia is an illness that does not suddenly affect certain areas of the brain
- It slowly and gradually damages cells in the different parts of the brain, altering its' biological and neurochemical structure and composition
- Some areas of the brain become damaged earlier than others (example- Memory)
- Patients are able to continue performing certain tasks for longer periods of time



Insights